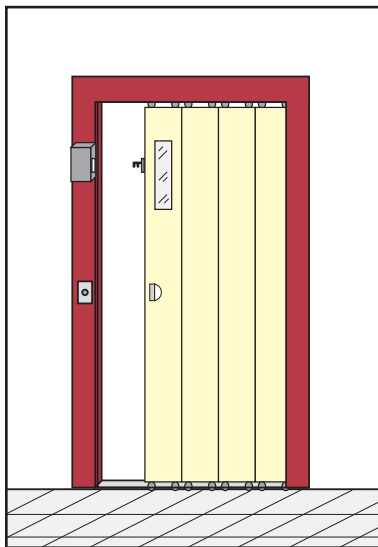
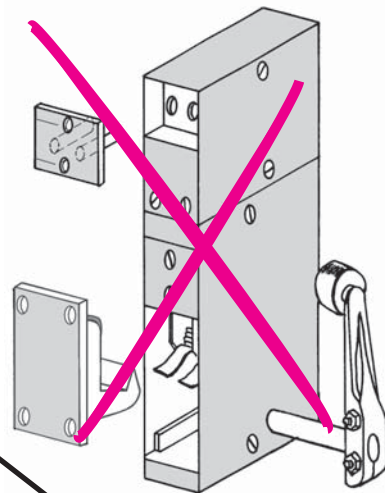


To replace :

Sliding door lock (type L)



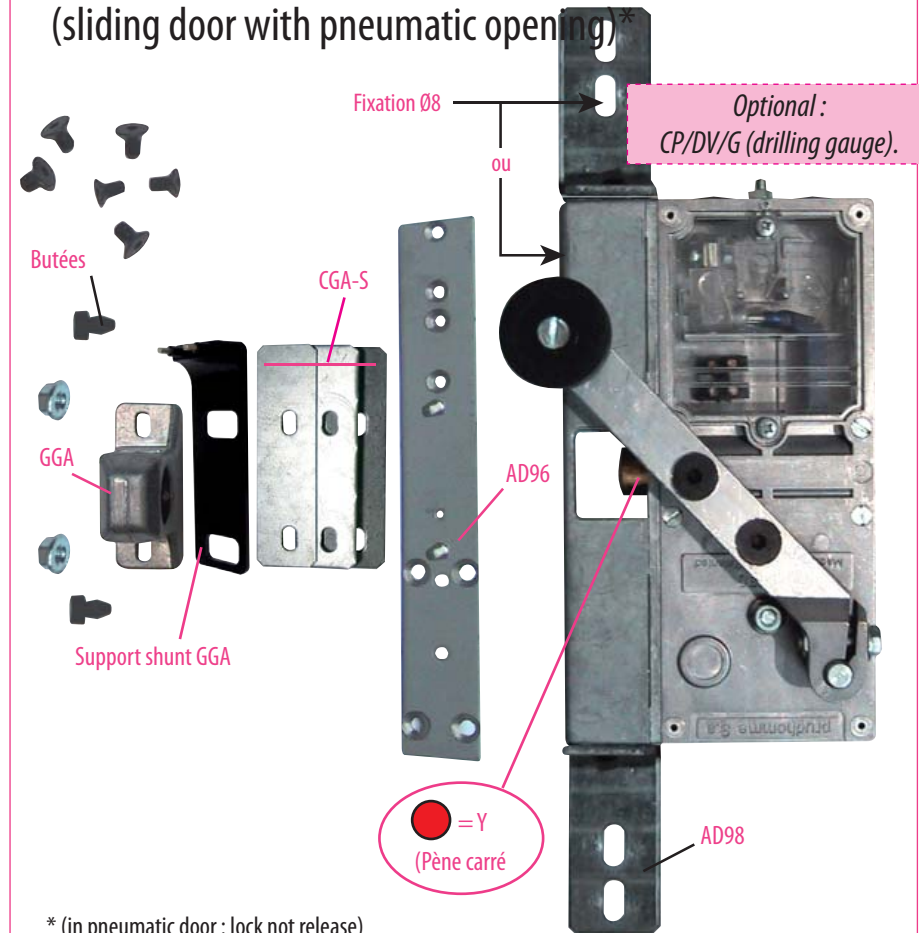
Substitution :

LR 180 ** GCL-N (prudhomme S.a.)

(sliding door with manual opening)

LR 180 ** GCL-N/PM (prudhomme S.a.)

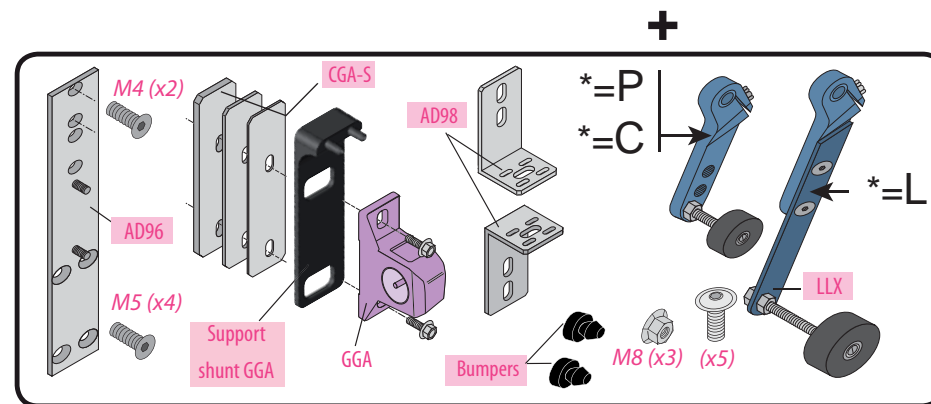
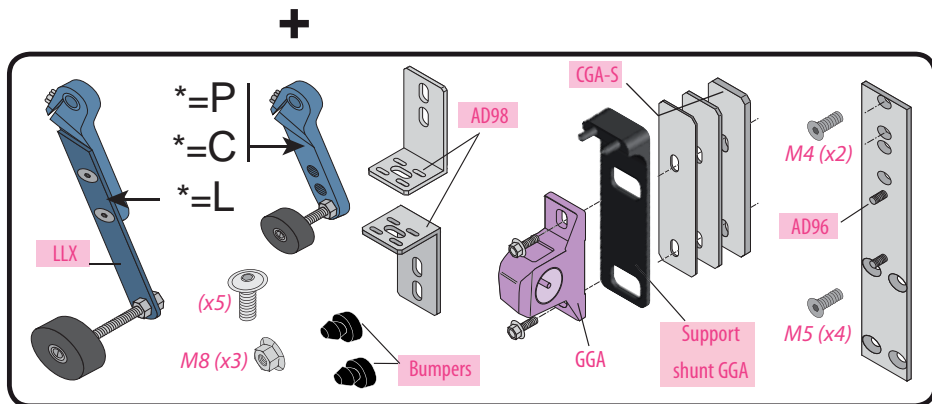
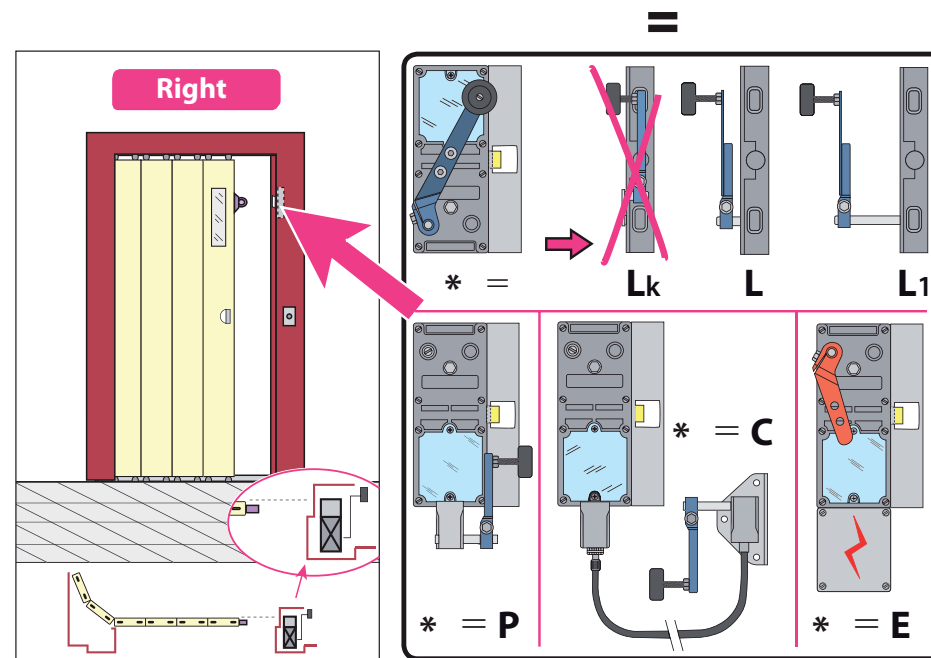
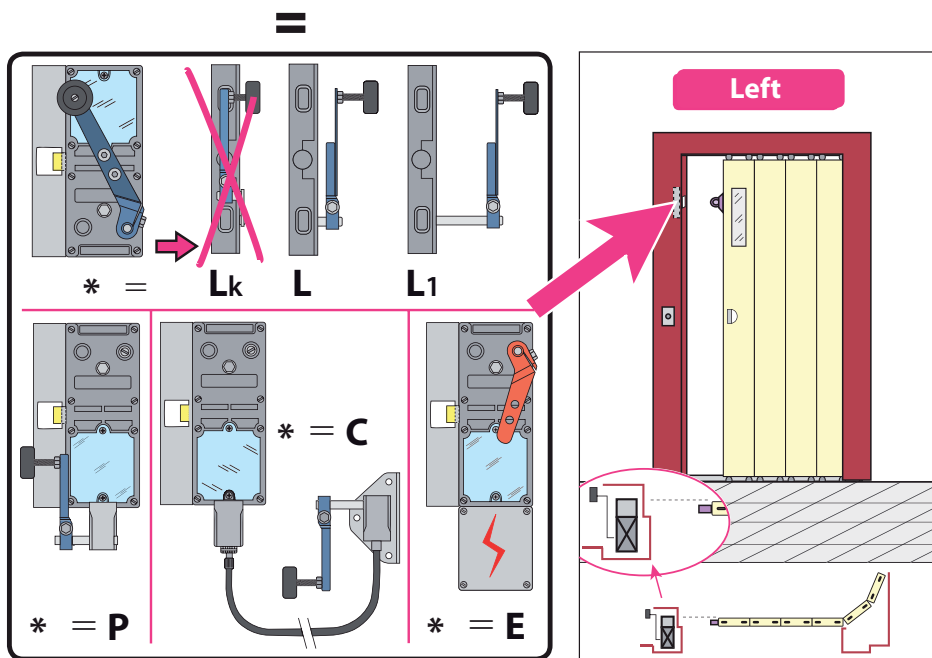
(sliding door with pneumatic opening)*



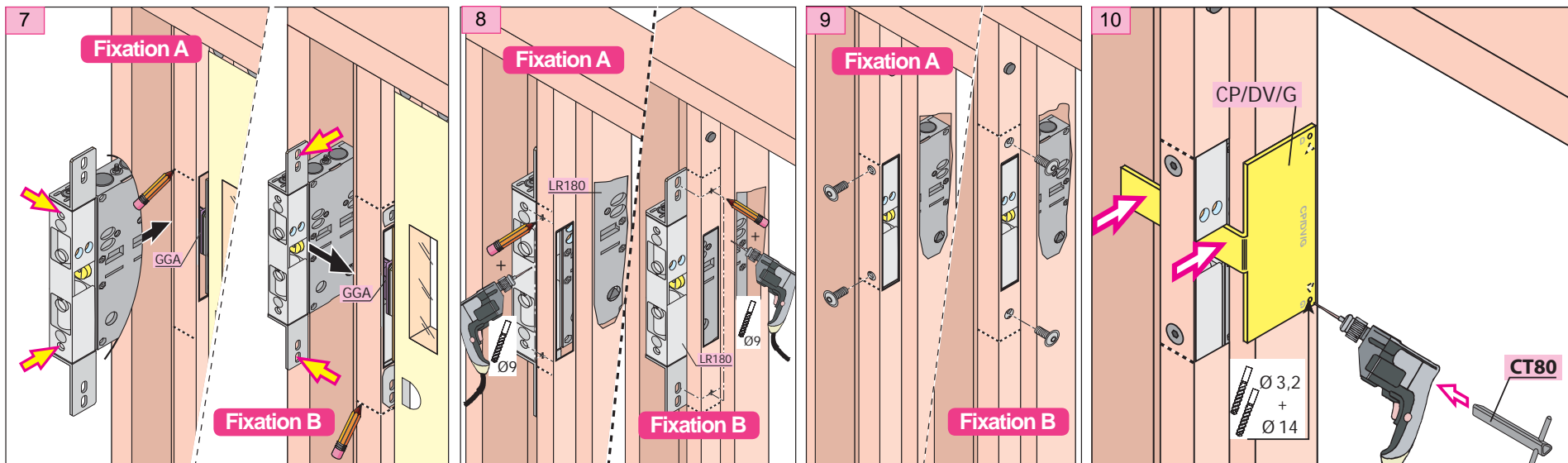
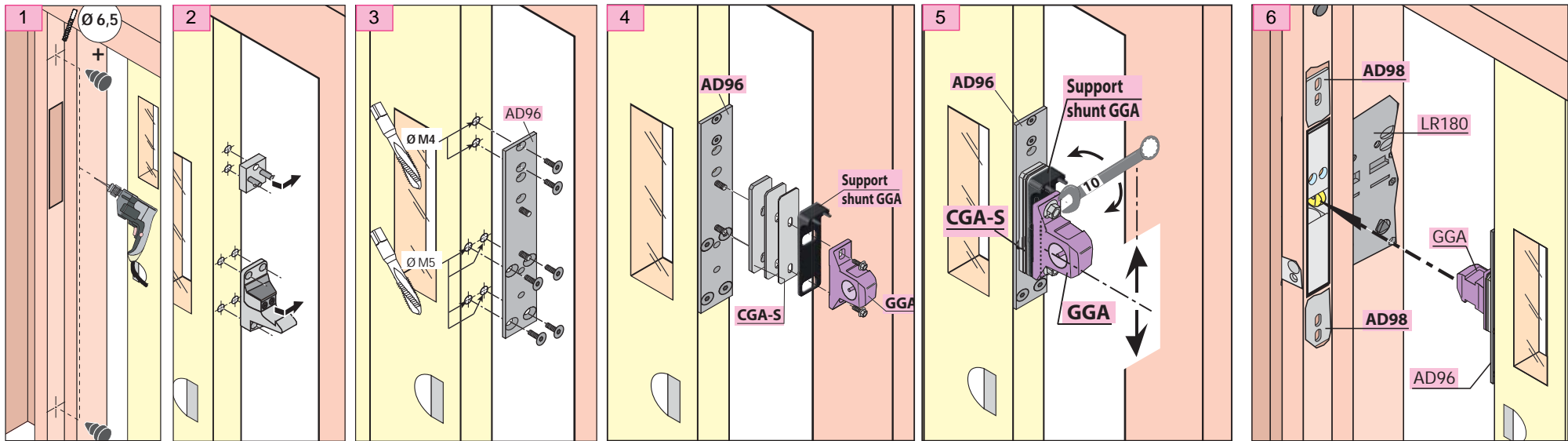
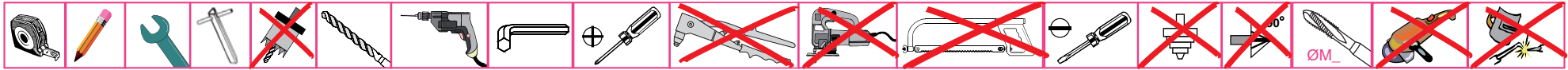
* (in pneumatic door : lock not release)

réf.: LR180 * **G** GCL-S

réf.: LR180 * **D** GCL-S



Mounting stages



Incl. A du 12/08/2009

FP

Document non contractuel, sous réserve de modification - Reproduction interdite.

For sliding landing doors